

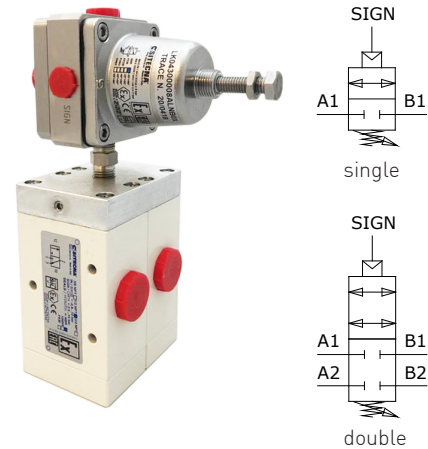
Copper free aluminium alloy 3/8", 1/2", 3/4" NPT lock-up valves – LK serie

Valvole di lock-up da 3/8", 1/2", 3/4" NPT in lega di alluminio esente rame – serie LK

www.sitecna.eu

- Suitable for automation equipment to onshore, offshore, pharmaceutical, medical and food applications
- Full material traceability
- Excellent stability and repeatability
- Accurate adjustment and high flow capacity
- Single or double locking possibility
- ATEX 2014/34/UE II 2G Ex h IIC T6/T5 Gb X
II 2D Ex h IIC T85°C/T100°C Db X

- Adatto per automazione in applicazioni marine, petrolchimiche, farmaceutiche, medicali e alimentari
- Completa rintracciabilità dei materiali
- Eccellente stabilità e ripetibilità
- Precise regolazioni ed elevate portate
- Possibilità di blocco singolo o doppio
- ATEX 2014/34/UE II 2G Ex h IIC T6/T5 Gb X
II 2D Ex h IIC T85°C/T100°C Db X



Media / Fluido	Compressed air, inert gases, sweet and sour gases
Port thread / Connessioni	3/8", 1/2", 3/4" NPT
Pilot connection Connessione pilotaggio	1/4" NPT
Signal connection Connessione segnale	1/8" NPT
Working pressure Pressione di lavoro	-0.9 - 10 bar
Max signal/output pressure Pressione massima segnale/uscita	7 bar
Working temperature / Temperatura di esercizio	-20°C up to 80°C (NBR); -25°C up to 90°C (FKM); -40°C up to 80°C (EPDM); -55° up tp 90°C (FVMQ)*
Upward adjustment/ Sensibilità in salita	1 bar
Downward adjustment/ Sensibilità in discesa	0,5 bar
Max lock-up pressure Massima pressione di intervento	7 bar

Air supply must be dry enough to avoid ice formation at temperatures below +2°C (+35°F).

***Special version in HNBR (WT -55° +90°C)**

It provides reliable shut down & isolation from control devices of the actuator whenever air pressure falls below operating safety point. Rugged and corrosion-resistant – made of aluminum alloy and SS AISI304/316L - Compact small package size – light weight
 Permette affidabile intercettazione ed esclusione dell'attuatore quando la pressione dell'aria scende al di sotto del livello minimo operativo. Robusto e resistente alla corrosione – Costruito lega di alluminio ed AISI304/316L - Dimensioni di ingombro ridotte – Leggero

BUILDING MATERIALS	Materiali costruttivi
Body, bonnet, end plate of switch valve, nipple in AISI316	Corpo, tazza superiore, piattello switch valve, nipple in AISI316
Body, heads of spool valves in painted copper free aluminum alloy	Corpo e testate spool valves in alluminio esente rame verniciato
Internals, lock and panel nuts, fixing screws in stainless steel	Vite di regolazione, dadi di bloccaggio e pannello, viti di fissaggio in acciaio inossidabile
Diaphragms & seals in elastomer	Diaframmi e guarnizioni in elastomero

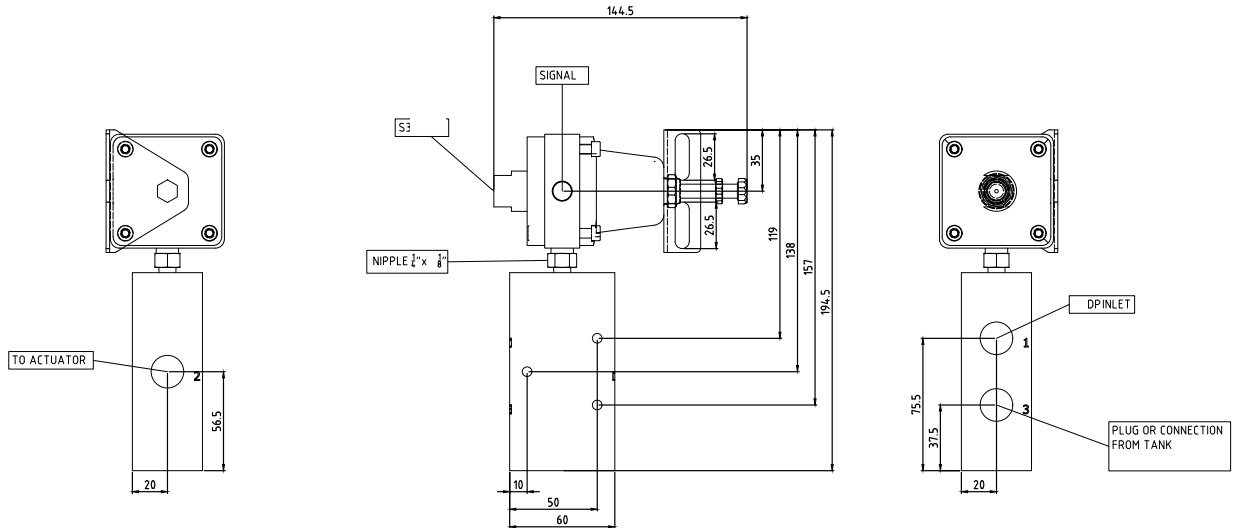
BT-LK8AL/C20A

Overall dimension

Dimensioni di ingombro

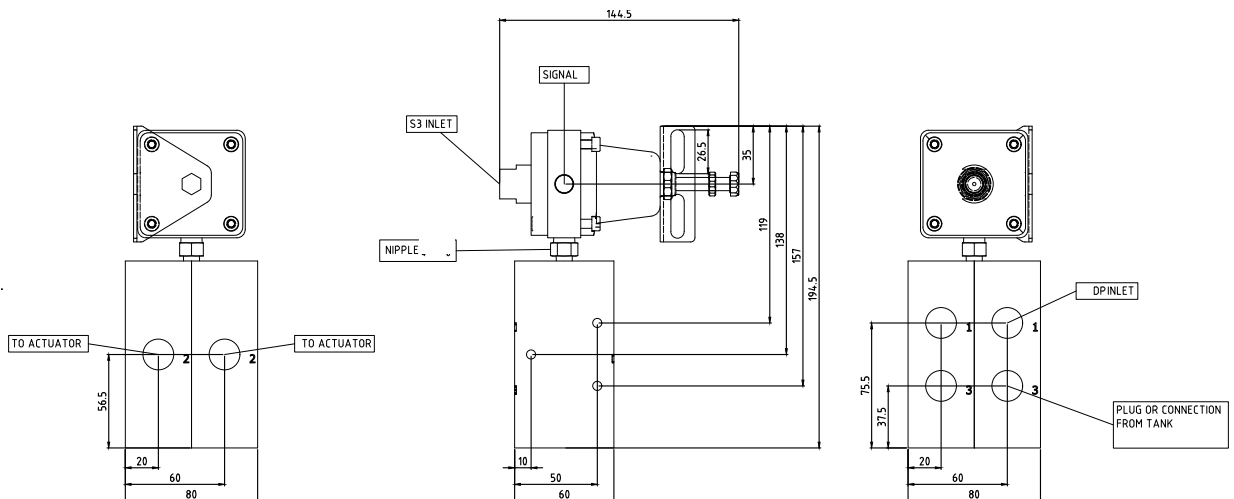
Single Lock-up valve

Valvola di Lock-up singola



Double Lock-up valve

Valvola di Lock-up doppia

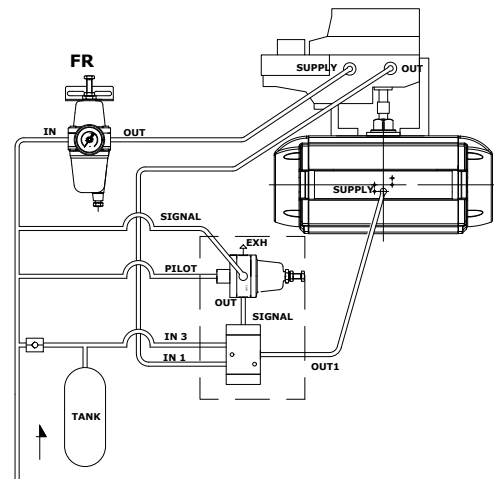
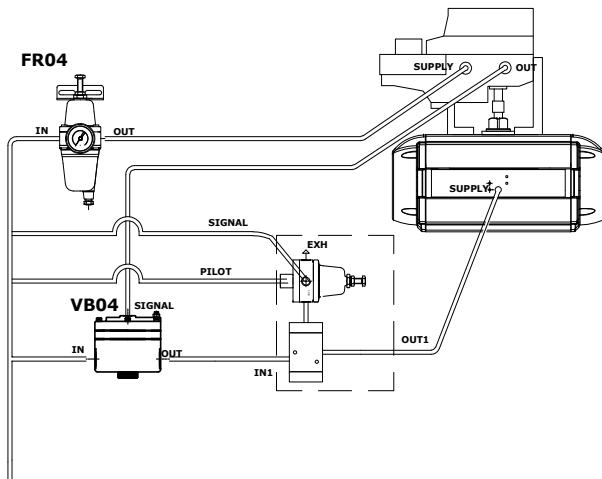


Application examples for LK08

Esempi di applicazione del LK08

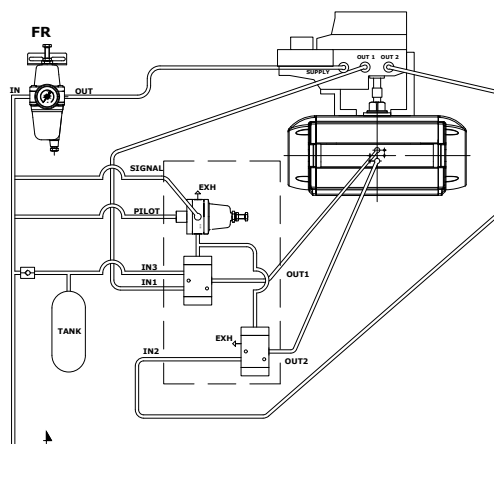
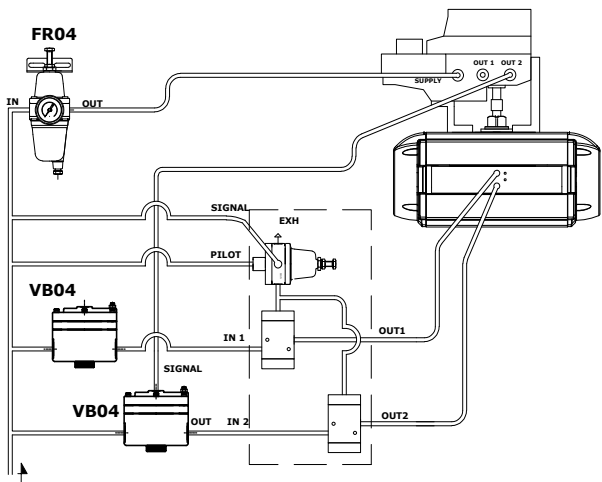
Single actuating actuator

Attuatore a singolo effetto



Double actuating actuator

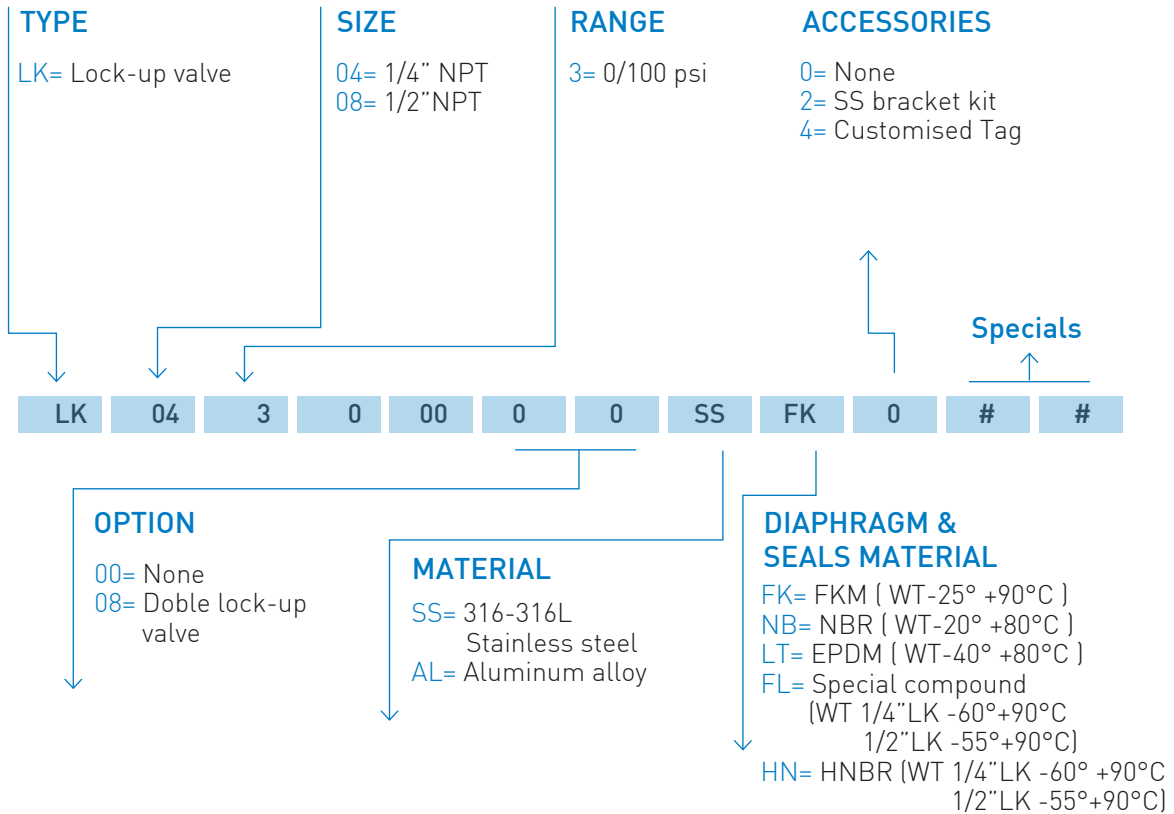
Attuatore a doppio effetto



www.sitecna.eu

Ordering information

Come ordinare



CODE EXAMPLES

LK	08	3	0	00	0	0	SS	FK	0		
----	----	---	---	----	---	---	----	----	---	--	--

1/2" NPT, SS316L, Single Lock up valve, with FKM diaphragm & seals, Cv0.9, WT -25°C to 90°C, with SS bracket

Valvola di lock-up singola da 1/4" NPT in AISI316L con diaframma e tenute in FKM, Cv 0.9, temperatura di lavoro da -25°C a +90°C

LK	04	3	0	00	0	8	AL	LT	2		
----	----	---	---	----	---	---	----	----	---	--	--

1/4" NPT, Epoxy painted aluminium alloy + SS304 or 316L, Double lock up valve with EPDM diaphragm & seals, CV 0.9, WT -40°C to +80°C, with SS bracket

Valvola di lock-up doppia da 1/4" NPT in lega di alluminio con verniciatura epossidica + AISI304-316L con diaframma e tenute in EPDM, Cv 0.9, temperatura di lavoro da -40°C a +80°C, con staffa inox



01-LK/C22A