

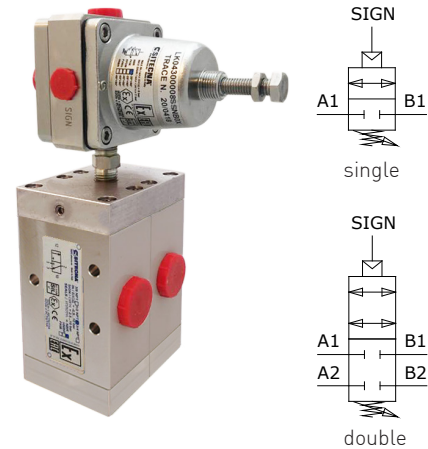
SS316L 3/8", 1/2", 3/4" NPT lock-up valves – LK serie

Valvole di lock-up da 3/8", 1/2", 3/4" NPT in AISI316L – serie LK

www.sitecna.eu

- Suitable for automation equipment to onshore, offshore, pharmaceutical, medical and food applications
- Full material traceability
- Excellent stability and repeatability
- Accurate adjustment and high flow capacity
- Single or double locking possibility
- ATEX 2014/34/UE II 2G Ex h IIC T6/T5 Gb X
II 2D Ex h IIC T85°C/T100°C Db X

- Adatto per automazione in applicazioni marine, petrolchimiche, farmaceutiche, medicali e alimentari
- Completa rintracciabilità dei materiali
- Eccellente stabilità e ripetibilità
- Precise regolazioni ed elevate portate
- Possibilità di blocco singolo o doppio
- ATEX 2014/34/UE II 2G Ex h IIC T6/T5 Gb X
II 2D Ex h IIC T85°C/T100°C Db X



| | |
|--|---|
| Media / Fluido | Compressed air, inert gases, sweet and sour gases |
| Port thread / Connessioni | 3/8", 1/2", 3/4" NPT |
| Pilot connection Connessione pilotaggio | 1/4" NPT |
| Signal connection Connessione segnale | 1/8" NPT |
| Working pressure Pressione di lavoro | -0.9 - 10 bar |
| Max signal/output pressure Pressione massima segnale/uscita | 7 bar |
| Working temperature / Temperatura di esercizio | -20°C up to 80°C (NBR); -25°C up to 90°C (FKM); -40°C up to 80°C (EPDM); -55° up to 90°C (FVMQ)* |
| Upward adjustment/ Sensibilità in salita | 1 bar |
| Downward adjustment/ Sensibilità in discesa | 0,5 bar |
| Max lock-up pressure Massima pressione di intervento | 7 bar |

Air supply must be dry enough to avoid ice formation at temperatures below +2°C (+35°F).

***Special version in HNBR (WT -55° +90°C)**

It provides reliable shut down & isolation from control devices of the actuator whenever air pressure falls below operating safety point. Rugged and corrosion-resistant – made in SS316L - Compact small package size – light weight

Permette affidabile intercettazione ed esclusione dell'attuatore quando la pressione dell'aria scende al di sotto del livello minimo operativo. Robusto e resistente alla corrosione – Costruito completamente in AISI316L - Dimensioni di ingombro ridotte – Leggero

| BUILDING MATERIALS | Materiali costruttivi |
|---|--|
| Body, bonnet, end plate of switch valve, Body, heads of spool valves nipple in AISI316 | Corpo, tazza superiore, piattello switch valve, Corpo e testate spool valves. nipplo in AISI316 |
| Internals, lock and panel nuts, fixing screws in stainless steel | Vite di regolazione, dadi di bloccaggio e pannello, viti di fissaggio in acciaio inossidabile |
| Diaphragms & seals in elastomer | Diaframmi e guarnizioni in elastomero |

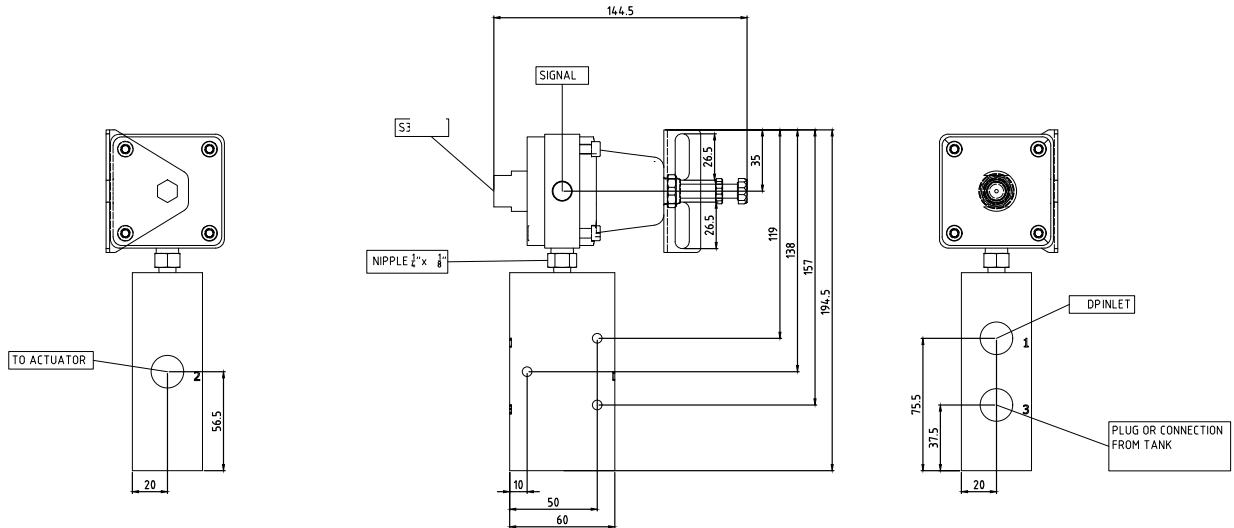
BT-LKSSL/C20A

Overall dimension

Dimensioni di ingombro

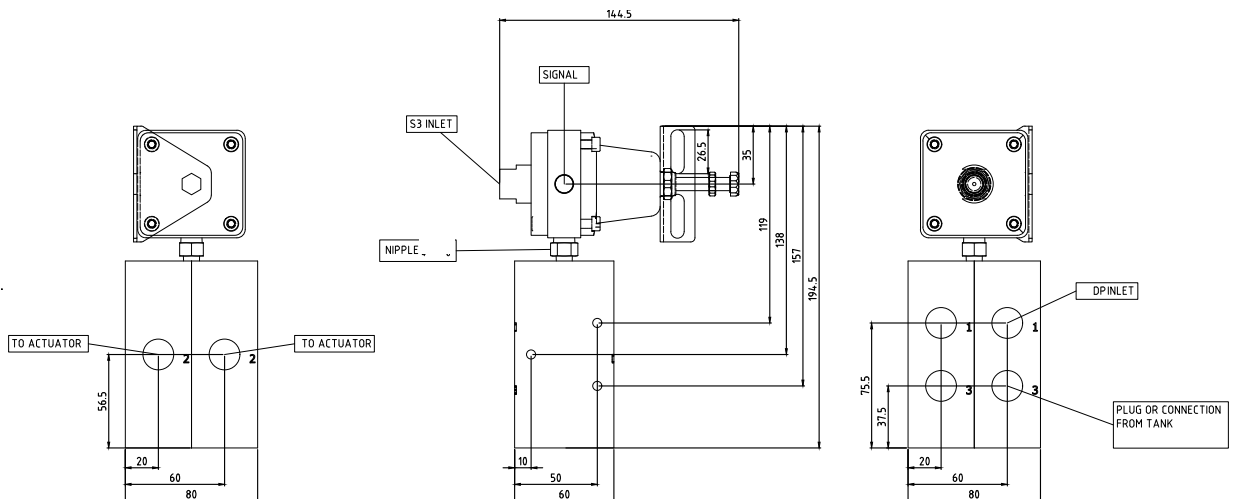
Single Lock-up valve

Valvola di Lock-up singola



Double Lock-up valve

Valvola di Lock-up doppia

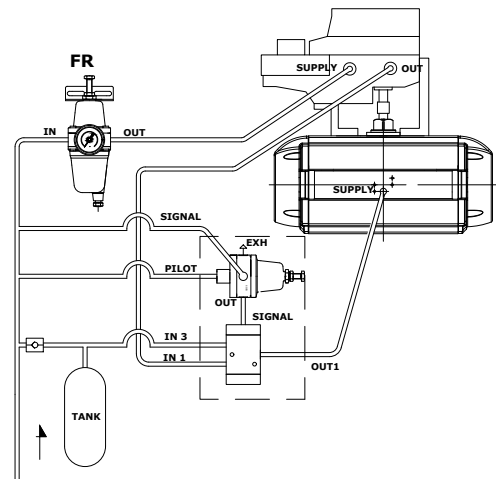
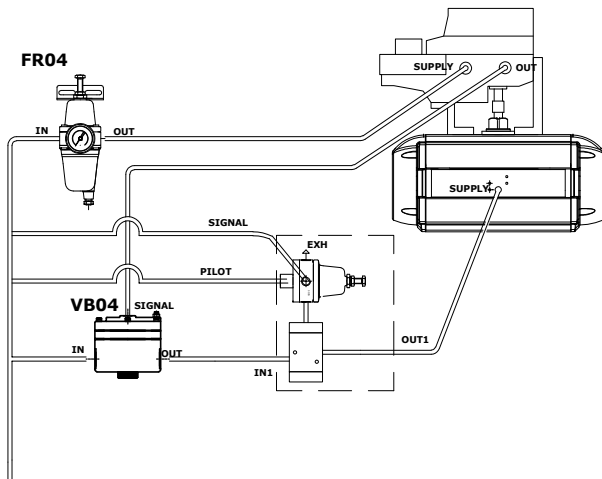


Application examples for LK08

Esempi di applicazione del LK08

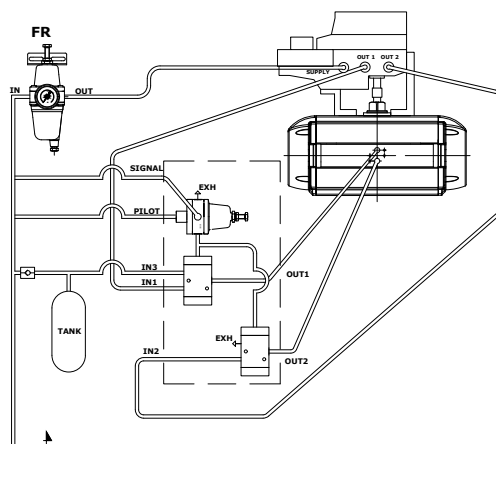
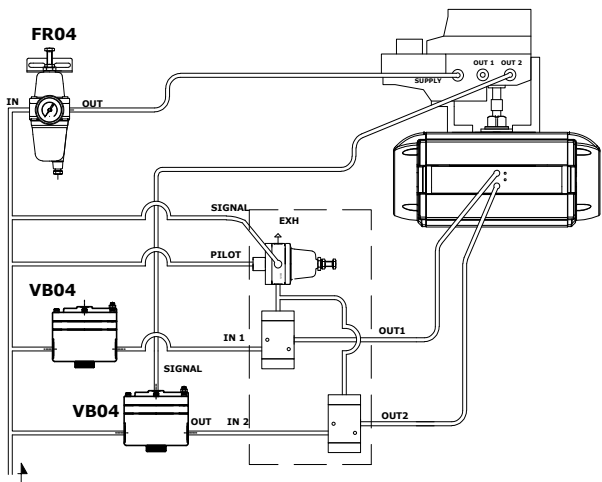
Single actuating actuator

Attuatore a singolo effetto



Double actuating actuator

Attuatore a doppio effetto

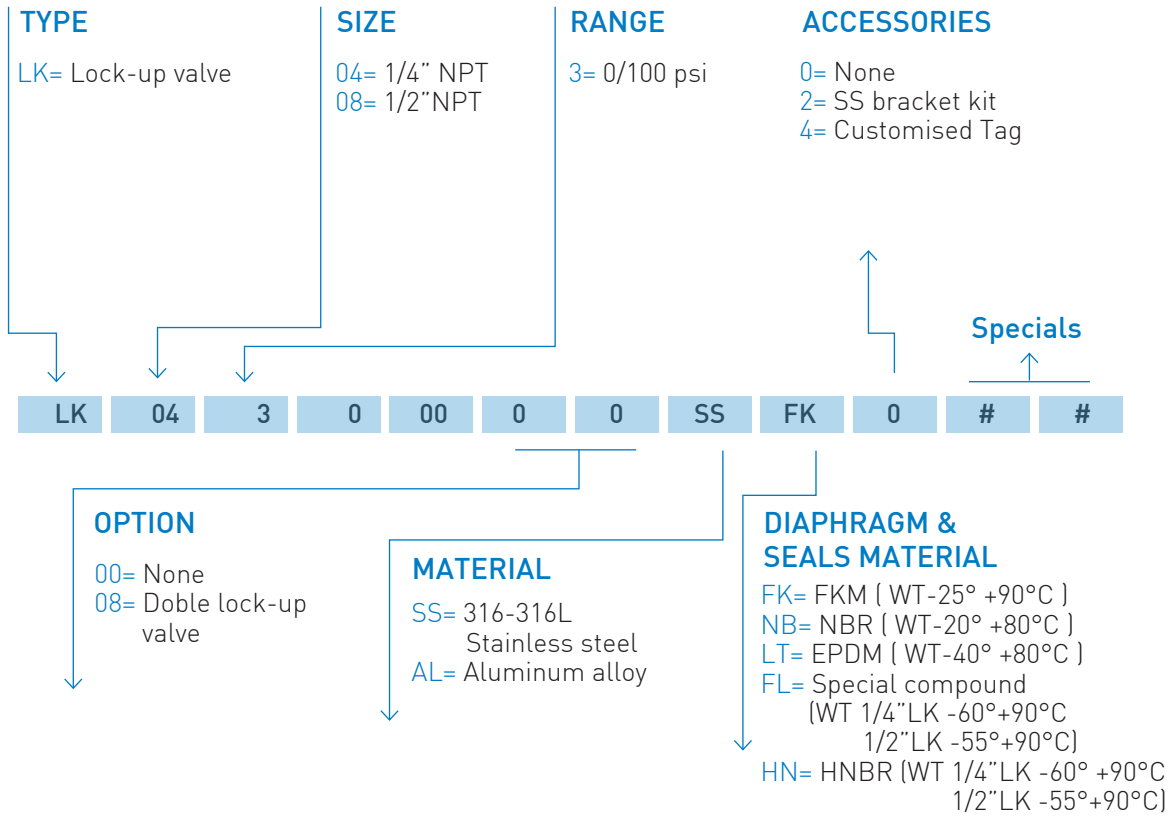


BT-LK4SS/C20C

Ordering information

Come ordinare

www.sitecna.eu



CODE EXAMPLES

| | | | | | | | | | | | |
|----|----|---|---|----|---|---|----|----|---|--|--|
| LK | 08 | 3 | 0 | 00 | 0 | 0 | SS | FK | 0 | | |
|----|----|---|---|----|---|---|----|----|---|--|--|

1/2" NPT, SS316L, Single Lock up valve, with FKM diaphragm & seals, Cv0.9, WT -25°C to 90°C, with SS bracket

Valvola di lock-up singola da 1/4" NPT in AISI316L con diaframma e tenute in FKM, Cv 0.9, temperatura di lavoro da -25°C a +90°C

| | | | | | | | | | | | |
|----|----|---|---|----|---|---|----|----|---|--|--|
| LK | 04 | 3 | 0 | 00 | 0 | 8 | AL | LT | 2 | | |
|----|----|---|---|----|---|---|----|----|---|--|--|

1/4" NPT, Epoxy painted aluminium alloy + SS304 or 316L, Double lock up valve with EPDM diaphragm & seals, CV 0.9, WT -40°C to +80°C, with SS bracket

Valvola di lock-up doppia da 1/4" NPT in lega di alluminio con verniciatura epossidica + AISI304-316L con diaframma e tenute in EPDM, Cv 0.9, temperatura di lavoro da -40°C a +80°C, con staffa inox



01-LK/C22A