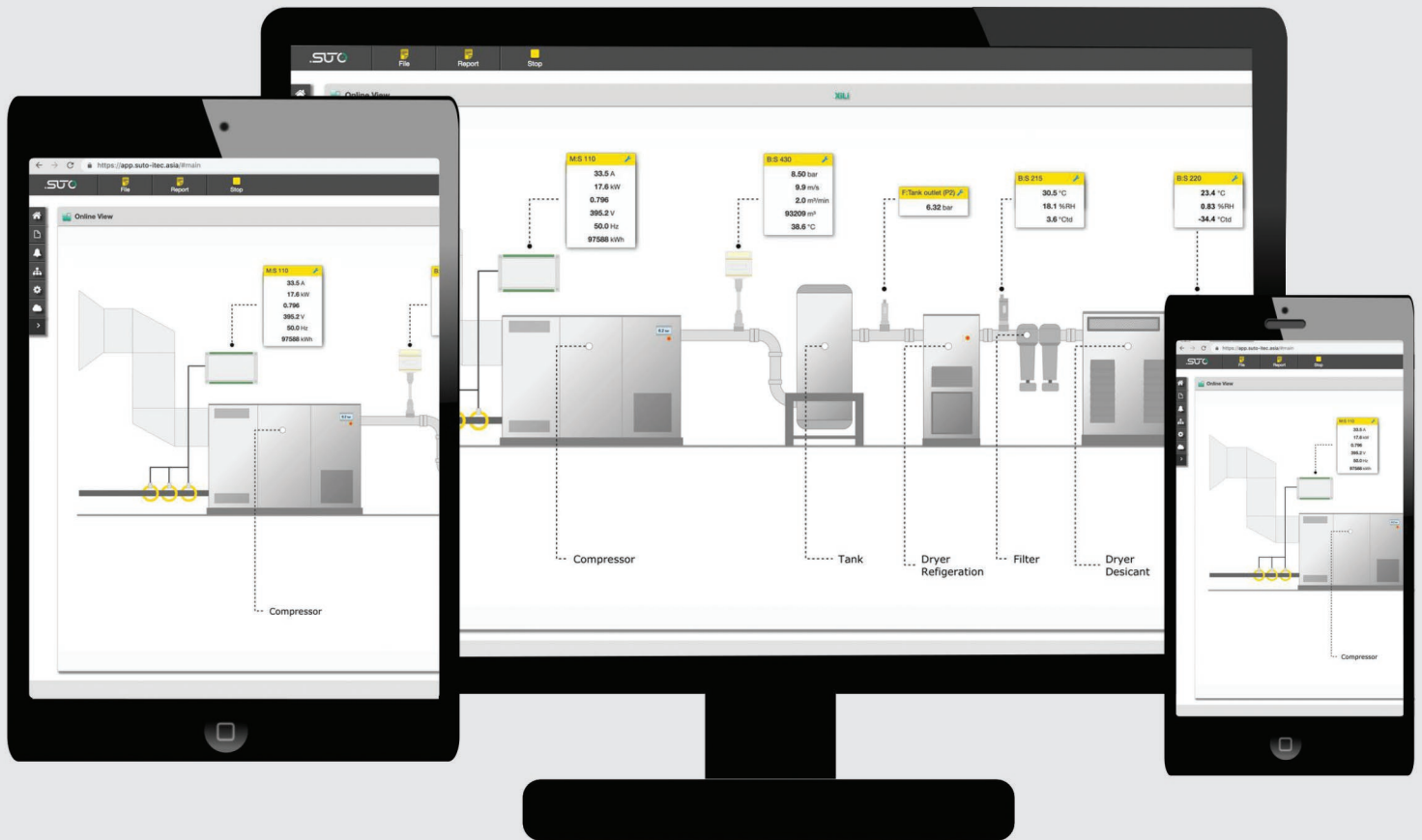
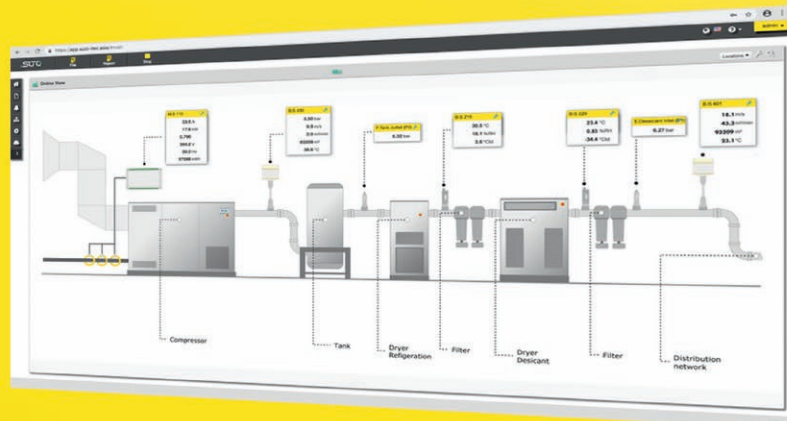


SMART MONITORING SYSTEM S4M



Smart monitoring — know your processes



S4M FEATURES

	<p>REMOTE ACCESS Client needs only a web browser</p>		<p>REPORT FUNCTION Easy report generation</p>
	<p>EASY INSTALLATION Wizard guided installation</p>		<p>UNDER CONTROL Alarm definition at a click</p>
	<p>DATA BASE data logging on server</p>		<p>AUTO DETECT System integration within seconds</p>

S4M is the complete monitoring solution for your energy management. It delivers real-time analytics of installations and can identify potential issues before they happen. S4M intelligently gathers, compares and analyses data to help compressed air users increase maintenance and service efficiency, make energy savings easy, quick and rewarding.

By server installation, and using the latest web technology, S4M is designed to provide cloud based service or local server installation, which allows user to monitor and collect granular, real-time energy consumption data of individual compressed air system anywhere at any time.

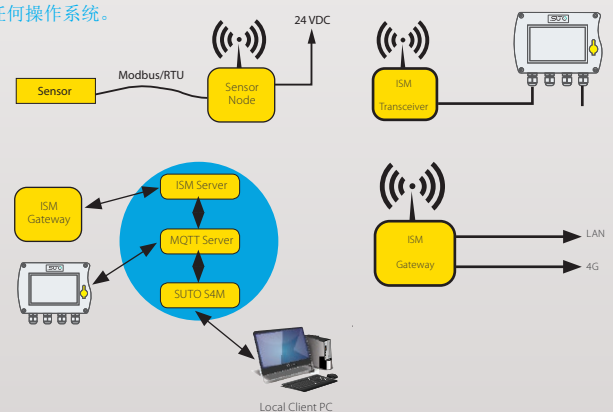
S4M是一个能源管理监测的整体解决方案。通过实时数据分析，提前发现潜在问题。通过对数据的采集、比较和分析，S4M可协助空压机用户提升维护效率，让节能变得简单、快速和有益。S4M可安装在云服务器或本地服务器上，结合最新的Web技术，用户可远程随时访问、监测和保存压缩空气系统的实时能耗数据。

S4M BENEFITS

- Easy to use monitoring solution
- Simple installation with installation wizard
- Server / Client Structure. Client is independent from any operation system.
- Alarm monitoring and indication on screen.
- Graphical data analysis
- Multiple languages
- Third-party support
- Scalable to fit your application

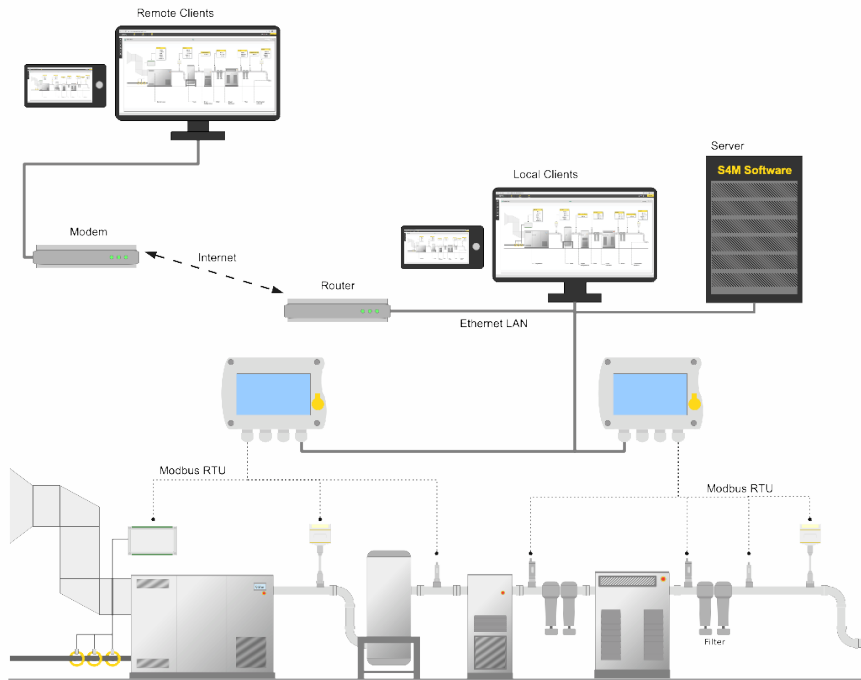
- 操作简单的监控解决方案
- 向导安装，简单快速
- 服务器/客户端架构。适用于任何操作系统。
- 报警监测和显示功能
- 图表分析功能
- 多语言支持
- 支持第三方设备
- 不同需求，灵活配置

S4M used for low power wide-area network solution

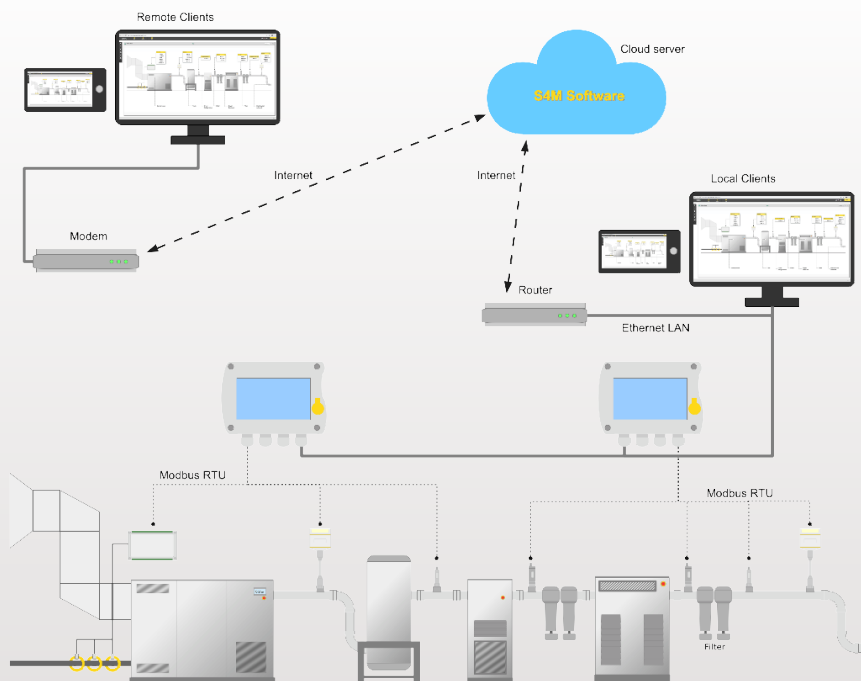


S4M-your plant under control

S4M Local Installation



S4M Cloud Installation



S4M helps you to keep your plant under your control. Gathering the data of all installed sensors and measurement system. Combining them into a single software solution which enables you to take back the control of your system.

You want to try S4M?

Simply scan the code or visit <https://s4m.suto-itec.asia> to experience S4M.

username: **sutovisitor** password: **sutovisitor**



S4M SYSTEM REQUIREMENTS

Category	Minimum	Recommended
Processor	Intel Core I3 processor 1.3GHz	Intel Core I5 processor 3.0GHz
RAM (main memory)	1G	>2G
Free disk space for installation	1.5G	>2G
Free disk space for measurement data in database	10G	>100G
Network card	Yes	YES

S4M ORDERING

Please use the following table to assist in placing your order with our sales staff.



Visit our website or e-mail us:
www.suto-itec.com
sales@suto-itec.com

S4M SMART MONITORING SYSTEM	
Order No.	Description
M599 2031	S4M, data acquisition and analyzes software, 50 measuring channels
M599 2032	S4M, data acquisition and analyzes software, 100 measuring channels
M599 2033	S4M, data acquisition and analyzes software, unlimited measuring channels
M599 9000	Software setup, configuration and training
A1102	Add-on Energy Manager for S4M