

# COMPRESSED AIR ANALYZER S 551



**AUTO DETECT**  
SDI or Modbus-based SUTO sensors



The ideal data logger for energy analysis (ISO 50001) and air audits (ISO 11011)



Integrated web server for remote monitoring

## S 551 FEATURES



### AUTO DETECT

SDI or Modbus-based SUTO sensors



### TOUCH SCREEN

5" large color LCD



### VERSATILE CONNECTION

Up to 24 sensors inputs



### TIGHT PROTECTION

IP 65



### WEB SERVER

Access from world wide



### BACK-UP POWER

Battery as back-up power

### Easy to use

- Just connect the sensor and start the recording, no configuration and programming required
- Easy operation through color-touch display
- Integrated web server for remote monitoring

### Flexible

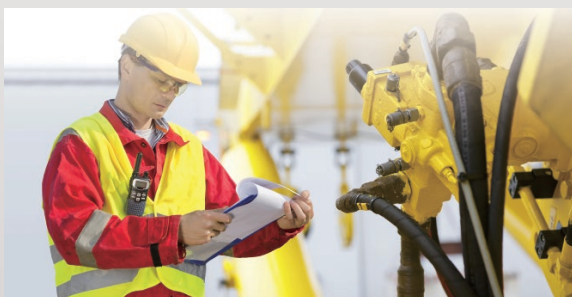
- Connectable sensors for all required measurement tasks (air flow, air consumption, power consumption, pressure, temperature and many more)
- Up to 24 inputs through extension boxes and Modbus
- Several loggers can be combined: no need to have long cables from the sensor to the logger
- Third party sensors can be easily connected

### Efficient

- S 551 logs data on site
- Data is analyzed in the office
- Cost effective solution
- Full software package includes:
  - S4A for basic analyzes
  - CAA for compressed air audit analyzes

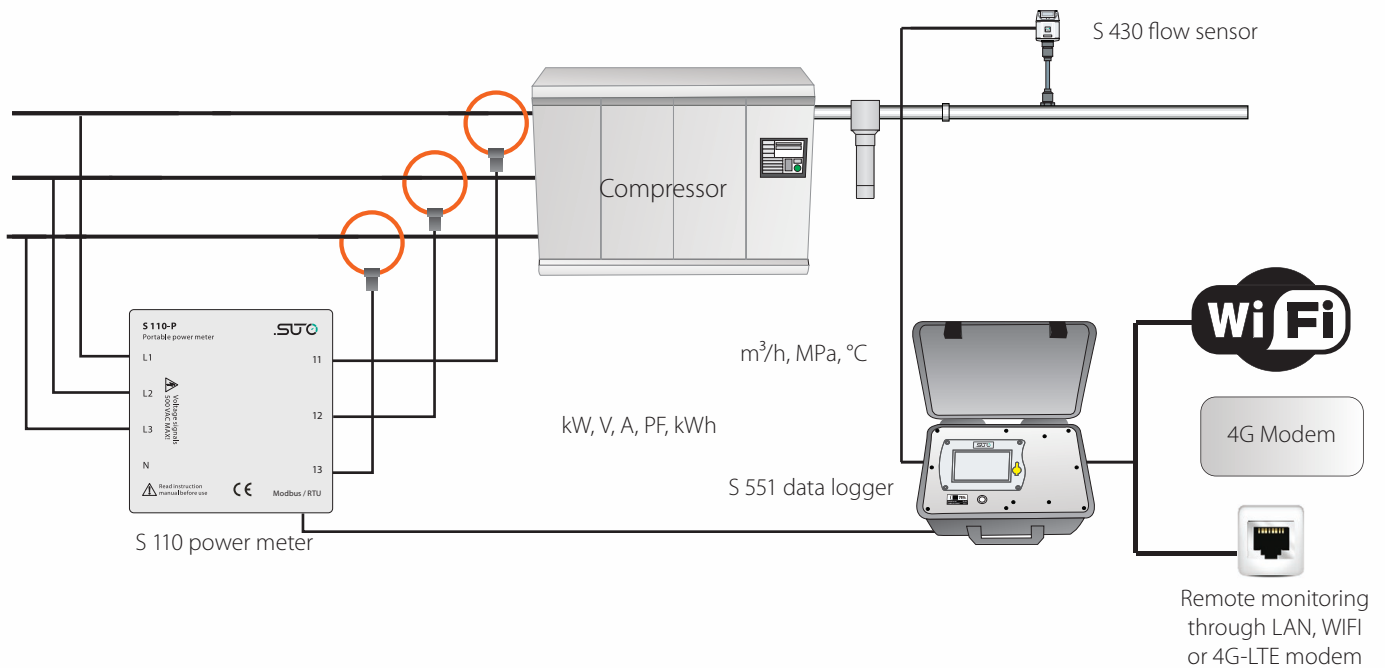
### Safe

- Power glitches and cuts won't affect performance: battery backup power



# S 551 APPLICATION

## Measurement setup for data logging on the supply



## S 551 CONNECTIONS

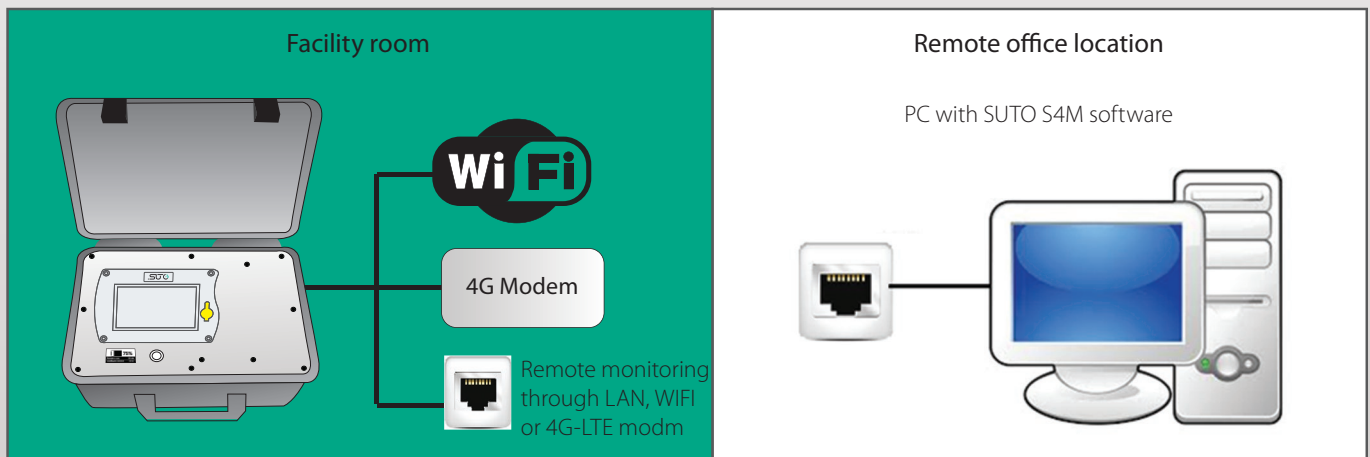
			Portable Modbus splitter box
			4G Modem and/or WiFi Modem
			Battery gauge indicating remaining battery power and life time

Ethernet port

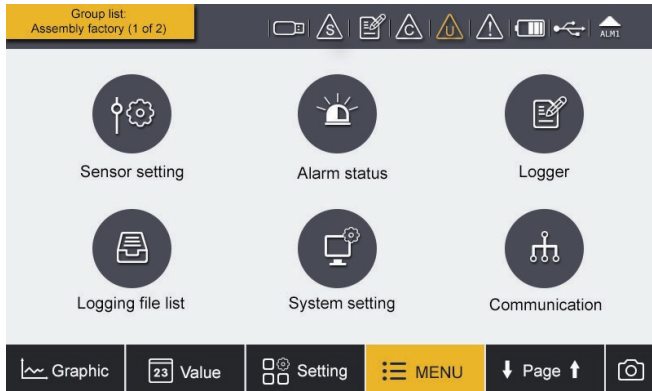
Sensor connection through 5 poles locking connectors and mains connector

75%  
Remain to use: 30 min  
Loading to connect: 3.5 w

The S 551 is capable of sending measurement data and status information to a remote server through the internet. This allows users to monitor the system remotely. The illustration below shows the principle setup.

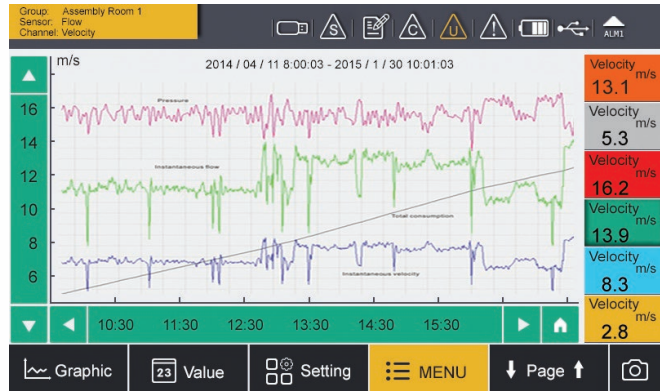


## S 551 TOUCH SCREEN OPERATION



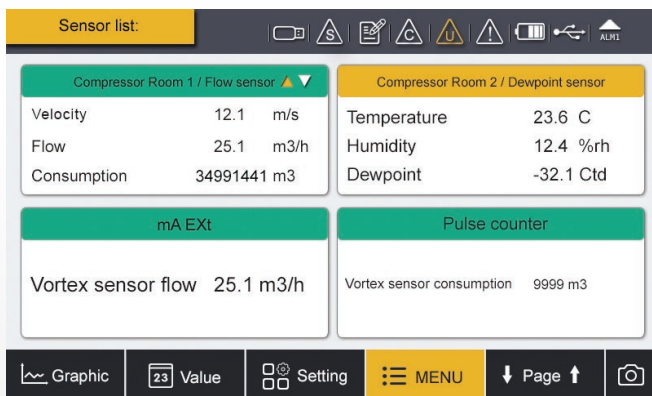
The S 551 comes with a high resolution 5" colour touch screen interface making the operation as simple as possible.

SUTO intelligent sensors are detected automatically on power-up. With a few settings the data logger is ready for operations with virtually unlimited memory size.



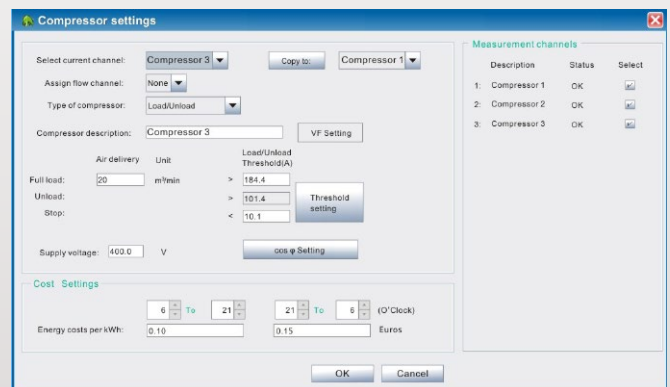
Select which channels you want to view or analyze and the built in graphic analyzer will help you identify problems immediately.

For detailed analysis we recommend using SUTO software S4A, CAA or S4M.



Up to 4 sensors can be viewed on one page and through pagem scrolling further sensors can be displayed.

## S 551 DATA ANALYSIS WITH THE COMPRESSED AIR ANALYZER










Through SUTO software S4A recordings are downloaded to the PC via USB or Ethernet port. The basic analysis can be done in S4A.

For more sophisticated compressor analysis the SUTO CAA software offers many advanced features such as: performance statistics of compressors (efficiency, air delivery, load/unload cycles), leakage analysis, report generation and more. Comparisons with base line measurements from last year or last month help to identify system changes.

## S 551 ORDERING

Please use the following table to assist in placing your order with our sales staff.

	<b>Data logger</b>	
	<b>P560 5100</b>	S 551-P4, portable data recorder, 4 digital input channels, power cord, USB cable, S4A software, CAA software
	<b>P560 5101</b>	S 551-P6, portable data recorder, 4 digital input channels and 2 analog, power cord, USB cable, S4A software, CAA software
	<b>Flow sensors</b>	
	<b>S601 0401</b>	S 401-M, insertion type flow sensor, DN15 ... DN300, Modbus RTU, 5 m cable with connector
	<b>S601 0430</b>	S 430 pitot tube flow sensor, DN25 ... DN250, 220 mm shaft, SDI, Modbus RTU, 5 m cable with connector
	<b>Dew point sensor</b>	
	<b>S601 0215</b>	S 215 dew point sensor, -20°Ctd ... +50°Ctd, measuring chamber, 5 m cable with connector
	<b>S601 0212</b>	S 212 dew point sensor, -50°Ctd ... +20°Ctd, measuring chamber, 5 m cable with connector
	<b>S601 0220</b>	S 220 dew point sensor, -100°Ctd ... 0°Ctd, measuring chamber, 5 m cable with connector
	<b>Pressure sensors</b>	
	<b>S694 1886</b>	Pressure sensor, 0 ... 1.6 MPa(g), 5 m cable with connector for S 551
	<b>S694 0356</b>	Pressure sensor, 0 ... 4.0 MPa(g), 5 m cable with connector for S 551
	<b>Amp sensor</b>	
	<b>S554 0156</b>	SUTO current clamp sensor, 1000A, 100 mm diameter, including connector to S 551
	<b>S554 0157</b>	SUTO current clamp sensor, 3000A, 150 mm diameter, including connector to S 551
	<b>Temperature sensor</b>	
	<b>S693 0005</b>	Temperature transmitter, -50°C ... +200°C, 4 ... 20 mA loop powered, 6 x 150 mm sensor tube, 5 m cable with connector
	<b>A554 6003</b>	Compression fitting, 6 mm, G 1/2" thread, 0.6 MPa
	<b>A554 6004</b>	Compression fitting, 6 mm, G 1/2" thread, 1.6 MPa
	<b>Power meter (for 3 phase and single phase measurement)</b>	
	<b>P554 0134</b>	Portable power meter S 110-P, Modbus RTU, including 4 test leads, 4 test clips, 5 m cable with connector to S 551
	<b>S554 0160</b>	Rogowski coil for S 110-P, 1000 A, 100 mm diameter, 1.8 m cable, connector to S 110-P
	<b>S554 0161</b>	Rogowski coil for S 110-P, 3000 A, 150 mm diameter, 1.8 m cable, connector to S 110-P
	<b>S554 0162</b>	Rogowski coil for S 110-P, 100 A, 160 mm diameter, 1.8 m cable, connector to S 110-P

Note: For 3 phases power supply 3 Rogowski coils are needed.

## S 551 ORDERING

Please use the following table to assist in placing your order with our sales staff.



Visit our website or e-mail us:  
[www.suto-itec.com](http://www.suto-itec.com)  
[sales@suto-itec.com](mailto:sales@suto-itec.com)

	<b>Liquid flow meter (clamp on ultra sound)</b>	
	<b>P554 0070</b>	Ultrasonic controller for liquid flow sensor, connectable to S 551, including 5 m connection cable to S 551 and to the sensors
	<b>S694 4603</b>	Ultra sound sensor pair, DN32 ... DN100, socket terminals
	<b>S694 4604</b>	Ultra sound sensor pair, DN100 ... DN700, socket terminals
	<b>S694 4605</b>	Ultra sound sensor pair, DN300 ... DN6000, socket terminals
	<b>Other sensors / extensions</b>	
	<b>P554 0080</b>	8 channel analog input extension, connectable to S 551, including 5 m cable with connector
	<b>A554 3314</b>	Portable Modbus splitter box, with M12 connector
	<b>Accessories</b>	
	<b>A553 0103</b>	Extension cable, 5 m, male-female connectors
	<b>A553 0110</b>	Open wires cable, 5 m cable with connector
	<b>A553 0111</b>	Sensor cable, M12, 5 m with connector to S 551
	<b>A554 0035</b>	Transport case S 551 for sensors and cables, L560 x W450 x H160 mm (internal compartment can be arranged according to your individual sensor requirements)
	<b>A554 0036</b>	Transport case, customized for 1 x S 110-P, 3 Rogowski coils, 4 x test leads, 4 x test clips, 1 x S 430

\* Please contact us for further accessories and details.