



Pneumatic Valve - Three Way - Universal

Benefits & Features

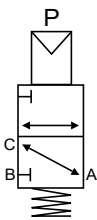
- Three way universal air operated valve
- Installation in any position
- Suitable for gaseous and liquid media
- Brass, Nickel Plated Brass or 316 Stainless Steel
- 1/4" to 1/2" BSP or NPT ports
- Low temperature model -45°C with HNBR seals

Specification

Configuration	Pilot piston
Port Sizes	1/4" to 1/2" BSP or NPT
Orifice	see data table below
Body	Brass, nickel plated brass or 316 stainless steel
Media	Gaseous or liquid media. Subject to material compatibility
Pressure ranges	0-40 Bar
Seals	see order codes table



Configuration



In: A, B or C
 Out: A, B or C
 Vent: A, B or C

At Rest: Port B Closed
 Port A and C Open

Air in P: Port B and A Open
 Port C Closed

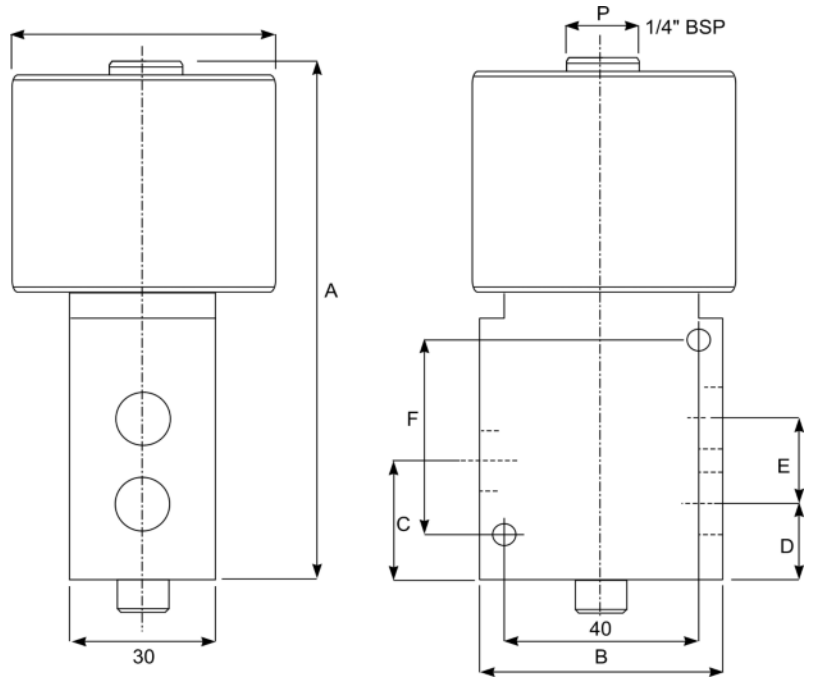
Technical Data

Model						Port Size BSP or NPT	Orifice MM	Nominal Max.	Pressure in Bar		Flow Factor KV (L/Min.)
	A	B	C	D	E				Differential		
									Min.	Max.	
M03	70	C				1/4"	7	14	0	14	12.5
M03	70	D				1/4"	7	14	0	14	12.5
M03	11	E				3/8"	11.0	14	0	14	30
M03	11	T				3/8"	11.0	14	0	14	30
M03	11	F				1/2"	11	14	0	14	30
M03	11	G				1/2"	11.0	14	0	14	30

Pneumatic Valve - Three Way - Universal

Weights & Dimensions

Port Size	Weight Kg.	Dimensions MM					
		A	B	C	D	E	F
1/4"	1.3	125	50	35.5	25.5	20	41
3/8"	1.6	139	60	43.5	28.5	30	57
1/2"	1.6	139	60	43.5	28.5	30	57



Seal Kits



Seal Material	Port Size (Brass Body)		Port Size (Stainless Steel Body)	
	1/4"	3/8" & 1/2"	1/4"	1/2"
NBR	KGM/M03T70.0	KGM/M03T11.0	KGM/M22I50.0	KGM/M22I70.0
VITON	KGM/M03T70.1	KGM/M03T11.1	KGM/M22I50.1	KGM/M22I70.1
HNBR	KGM/M03T70.8	KGM/M03T11.8	KGM/M22I50.8	KGM/M22I70.8

Order Codes

A	Body	B	Port	C	Seals (fluid temp. min / max)		
T	Brass	C	1/4" BSP	D	1/4" NPT	0	NBR (-10°C to + 70°C)
N	Nickel Plated Brass	E	3/8" BSP	T	3/8" NPT	1	VITON (-10°C to + 90°C)
I	316 Stainless Steel*	F	1/2" BSP	G	1/2" NPT	7	HNBR (-45°C to + 90°C)
* 1/4" & 1/2" bodies only							