

Pneumatic Valve - Five Way - Single Actuator

Benefits & Features

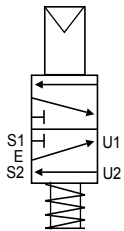
- Five way single actuator air operated valve
- Installation in any position
- Suitable for gaseous and liquid media
- Brass, Nickel Plated Brass or 316 Stainless Steel
- 1/4" BSP or NPT ports

Specification

Configuration	Pilot piston
Port Sizes	1/4" BSP or NPT
Orifice	see data table below
Body	Brass, nickel plated brass or 316 stainless steel
Media	Gaseous or liquid media. Subject to material compatibility
Pressure ranges	0-10 Bar
Seals	see order codes table



Configuration



M04 Single Actuator, Monostable.

In: E
 At Rest: From E to U1
 From U2 to S2
 Air in P: From E to U2
 From U1 to S1

Technical Data

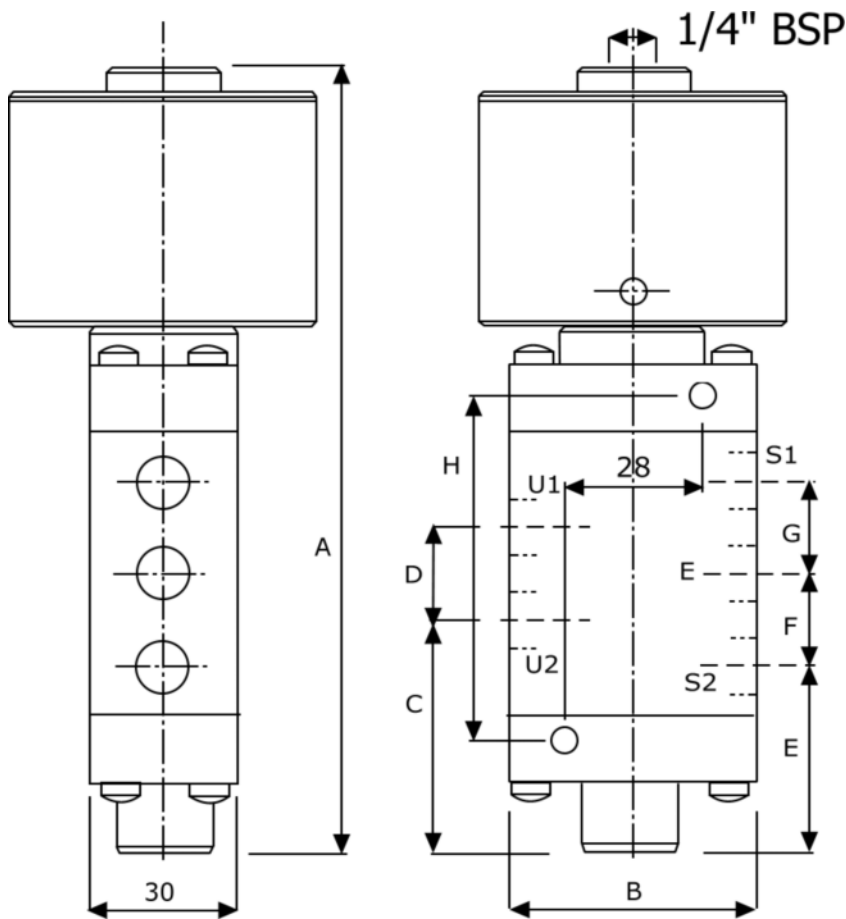
Model	A	70	B	C	1/4"	D	E	Orifice MM	Nominal Max.	Pressure in Bar		Flow Factor KV (L/Min.)
										Differential		
										Min.	Max.	
M04								7.0	10	0	10	12.5



Pneumatic Valve - Five Way - Single Actuator

Weights & Dimensions

Weight Kg.	Dimensions MM							
	A	B	C	D	E	F	G	H
1.5	115	50	42	18	33	18	18	67



Order Codes

A	Body	B	Port	C	Seals (fluid temp. min / max)		
T	Brass	C	1/4" BSP	D	1/4" NPT	0	NBR (-10°C to + 70°C)
N	Nickel Plated Brass					1	VITON (-10°C to + 90°C)
I	316 Stainless Steel					7	HNBR (-45°C to + 90°C)