

Pneumatic Valve - Five Way - Single Actuator

Benefits & Features

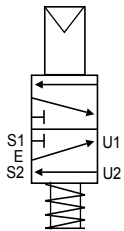
- Five way single actuator air operated valve
- Installation in any position
- Suitable for gaseous and liquid media
- Brass, Nickel Plated Brass or 316 Stainless Steel
- 3/8" to 1/2" BSP or NPT ports

Specification

Configuration	Pilot piston
Port Sizes	3/8" to 1/2" BSP or NPT
Orifice	see data table below
Body	Brass, nickel plated brass or 316 stainless steel
Media	Gaseous or liquid media. Subject to material compatibility
Pressure ranges	0-10 Bar
Seals	see order codes table



Configuration



M14 Single Actuator, Monostable.

In: E
 At Rest: From E to U1
 From U2 to S2
 Air in P: From E to U2
 From U1 to S1

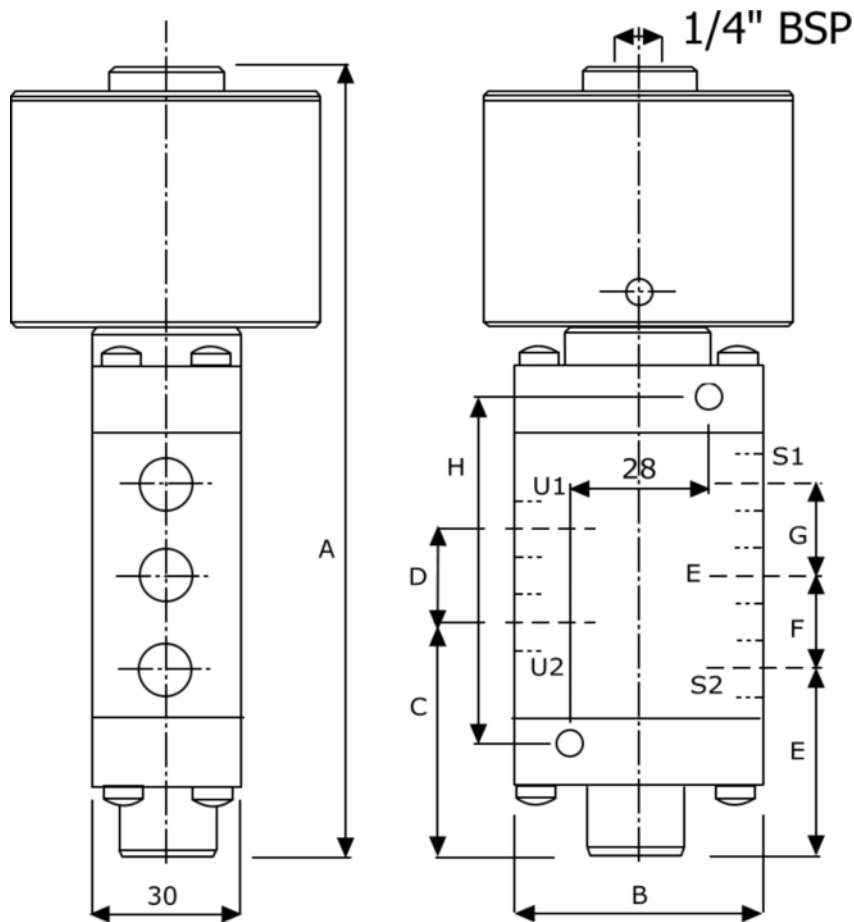
Technical Data

Model	A	B	C	D	E	Orifice MM	Nominal Max.	Pressure in Bar		Flow Factor KV (L/Min.)
								Differential		
								Min.	Max.	
M14	11	E/T	3/8"			11.0	10	0	10	30
M14	11	F/G	1/2"			11.0	10	0	10	30

Pneumatic Valve - Five Way - Single Actuator

Weights & Dimensions

Weight Kg.	Dimensions MM							
	A	B	C	D	E	F	G	H
2.2	183	60	51	30	36	30	30	97



Order Codes

A	Body	B	Port	C	Seals (fluid temp. min / max)		
T	Brass	E	3/8" BSP	T	3/8" NPT	0	NBR (-10°C to + 70°C)
N	Nickel Plated Brass	F	1/2" BSP	G	1/2" NPT	1	VITON (-10°C to + 90°C)
I	316 Stainless Steel					7	HNBR (-45°C to + 90°C)