

Pneumatic Valve - Two Way Normally Closed

Benefits & Features

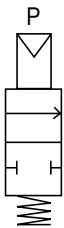
- Two way normally closed air operated valve
- Ideal for underwater applications such as water features
- Suitable for gaseous and liquid media
- Brass, Nickel Plated Brass or 316 Stainless Steel (1/2" & 3/4" only)
- 3/8" to 2" BSP or NPT



Specification

Configuration	Pilot diaphragm
Port Sizes	3/8" to 2" BSP or NPT
Orifice	see data table below
Body	Brass, nickel plated brass or 316 stainless steel
Media	Gaseous or liquid media. Subject to material compatibility
Pressure ranges	see data table
Seals	see order codes table

Configuration



In: IN
 Out: OUT
 At Rest: IN and OUT closed
 Air in P: IN to OUT

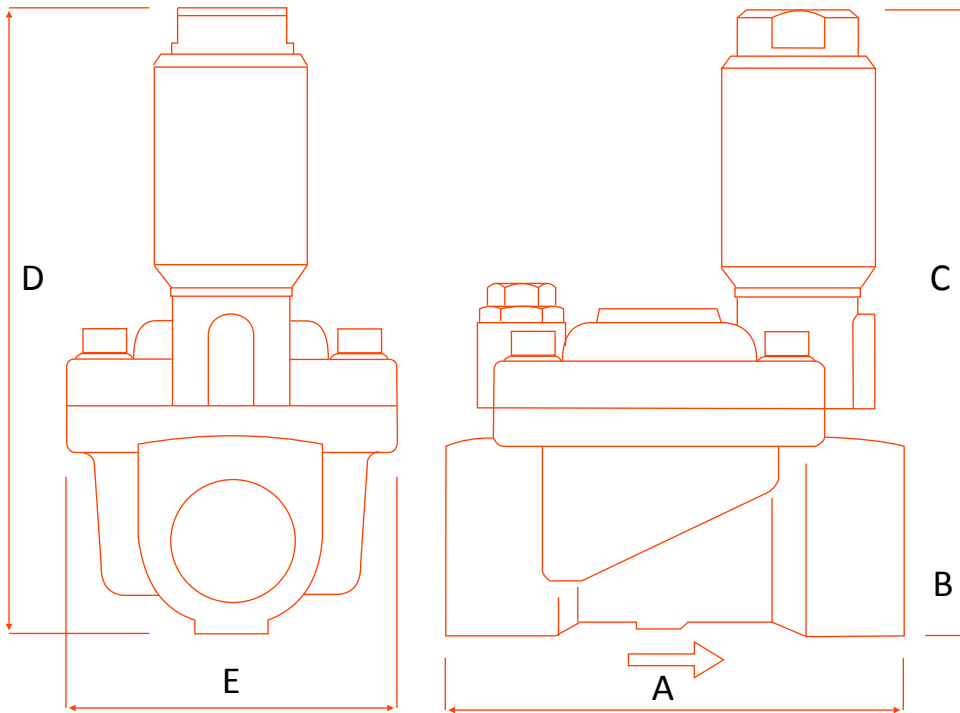
Technical Data

MODEL					Orifice mm	Body Rating	Min./Max. Operating Differential Pressures. BAR.		KV Flow Factor L/min.	
	A	B	C	D			Min.	Max.		
M65	12				3/8"	12.7	25	0.2	16	35
M65	12				1/2"	12.7	25	0.2	16	40
M65	18				3/4"	18	25	0.2	14	87
M65	25				1"	25	25	0.2	12	170
M65	36				1 1/4"	36	20	0.3	10	300
M65	36				1 1/2"	36	20	0.3	10	340
M65	50				2"	50	20	0.3	10	600


Pneumatic Valve - Two Way Normally Closed

Weights & Dimensions

Port Size	Weight Kg	Dimensions mm				
		A	B	C	D	E
3/8"	0.55	64	14	87	101	45
1/2"	0.55	64	14	87	101	45
3/4"	0.85	82	17	96	113	55
1"	1.35	100	20	103	123	70
1 1/4"	2.85	134	28	110	138	98
1 1/2"	2.65	134	28	110	138	98
2"	4.45	152	35	121	156	120



Order Codes

A	Body	B	Port	C	Seals (fluid temp. min / max)	D	Optional Features		
T	Brass	E	3/8" BSP	T	3/8" NPT	0	NBR (-10°C to +70°C)	1	3 Way Solenoid Valve*
N	Nickel Plated Brass*	F	1/2" BSP	G	1/2" NPT	1	VITON (-10°C to +90°C)	* Type: C02T18C0P 	
I	316 Stainless Steel**	H	3/4" BSP	I	3/4" NPT				
	* Upon request **1/2" and 3/4" body only	L	1" BSP	M	1" NPT				
		N	1 1/4" BSP	O	1 1/2" BSP				
		V	1 1/2" NPT	P	2" BSP				
		W	2" NPT						