

## Solenoid Valve - 5 Way - Double Solenoid - Bistable - Closed Centres

### Benefits & Features

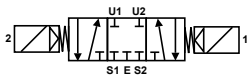
- Five way three position, double solenoid valve. Bistable
- Suitable for gaseous media
- High dependency applications
- Compact design
- Brass body 3/8" and 1/2"
- 316 stainless steel body 1/2" only
- Ex-d IIC -60°C to +60°C ambient versions
- ATEX, EAC Ex (CU TR 012) and IECEx, Ex-d approved

### Specification

<b>Configuration</b>	Internal pilot operation
<b>Port Sizes</b>	3/8" & 1/2" BSP or NPT
<b>Orifice</b>	11.0mm
<b>Kv</b>	see table below
<b>Media</b>	gaseous media, subject to material compatibility
<b>Pressure ranges</b>	3 - 10 Bar
<b>Seals</b>	NBR, VITON, HNBR



### Configuration



D17.d Double Solenoid Bistable. Closed Centres

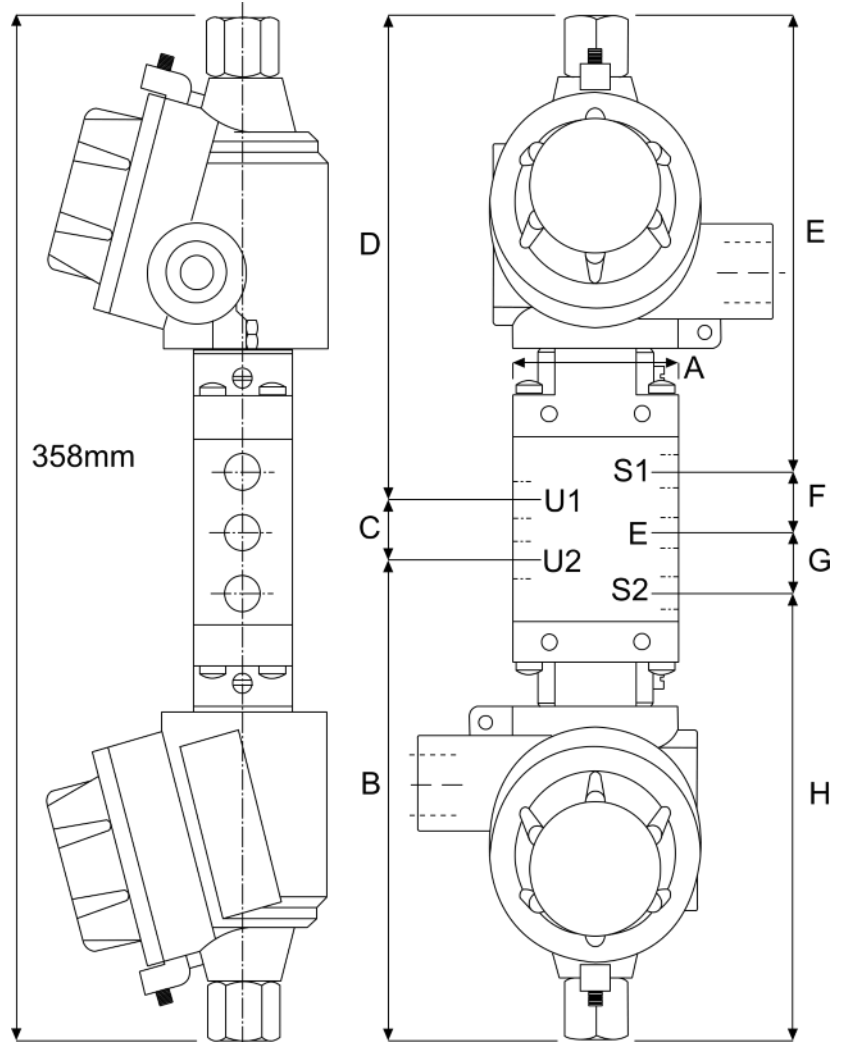
IN:	E
Coil 1 Energised:	From E to U1 From U2 to S2
Coil 2 Energised:	From E to U2 From U1 to S1
Coils De-energised:	E, U1, U2, S1, S2 closed

### Technical Data

MODEL	A	11	B	C	D	E	Port Size BSP or NPT	Body Rating	Orifice mm	Min. /Max. Operating Differential Pressures.		KV Flow Factor L/min.	
										Min. BAR	Maximum BAR		
													AC
D17							3/8" or 1/2"	10	11	3	10	10	30

## Solenoid Valve - 5 Way - Double Solenoid - Bistable - Closed Centres

### Weights & Dimensions



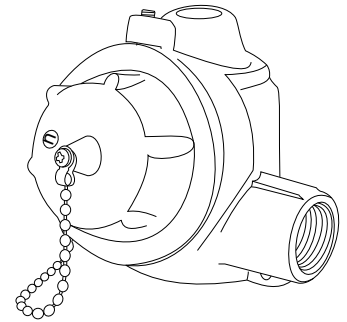
Weight Kg	Dimensions mm							
	A	B	C	D	E	F	G	H
2.2	60	164	30	164	149	30	30	149

### Order Codes

A	Body	B	Port	C	Seals (fluid temp. min / max)	D	Protection	E	Options		
T	Brass	E	3/8" BSP	T	3/8" NPT	0	NBR (-10°C to + 70°C)	B	II 1/2 GD Ex-d IIB T6 (-20 to +40°C)	X	Manual Override
I	316 Stainless Steel	F	1/2" BSP	G	1/2" NPT	1	VITON (-10°C to + 90°C)	C	II 1/2 GD Ex-d IIC T6 (-20 to +40°C)	/SG	Degreased for oxygen
	* 1/2" body only					7	HNBR (-10°C to + 90°C)	/LT	II 1/2 GD Ex-d IIC T6 (-60 to +60°C)		
								H	Ex-d c IIB IP67 IECEX		
								T	Ex-d c IIC IP67 IECEX		
								R	Ex-d IIC EAC Ex		
								S	IP67 (Safe Area)		

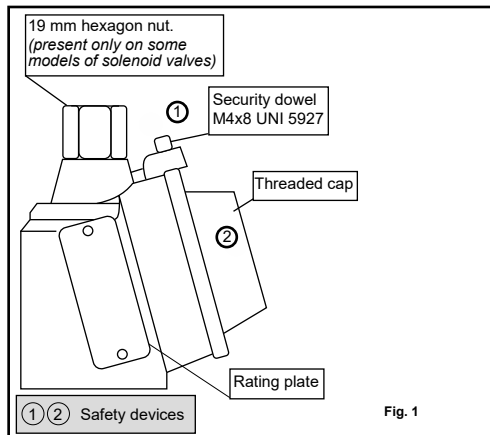
# Electrical Wiring - IP67 Housing

## Installation Procedures & Methods

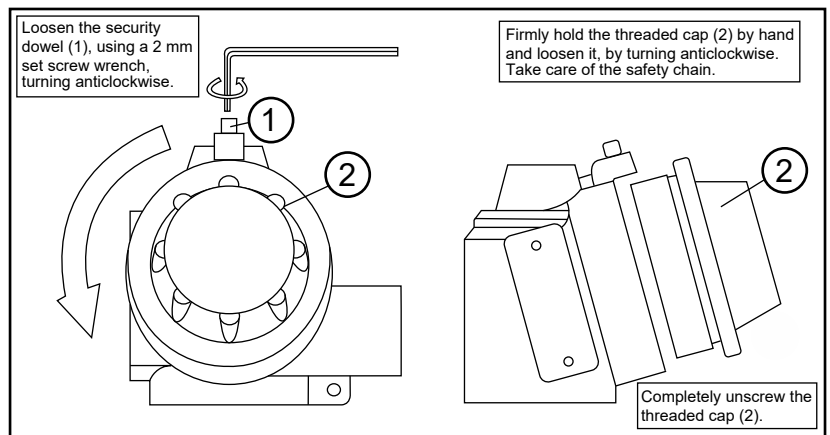


**Attention: For safety purposes, always ensure that the power supply is disconnected. After de-energising, allow 15 minutes before continuing the following procedures**

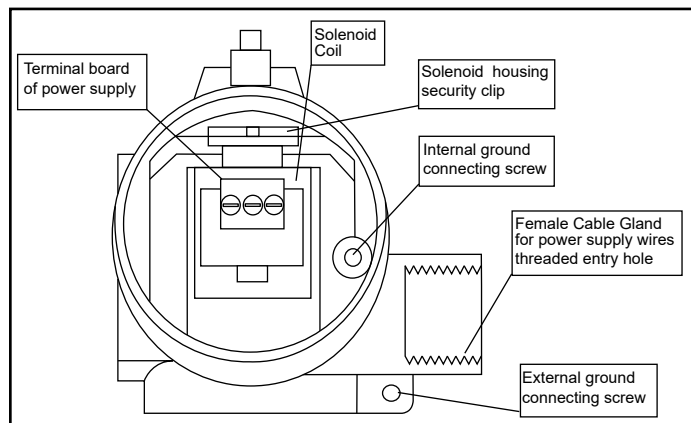
**A**



**B**

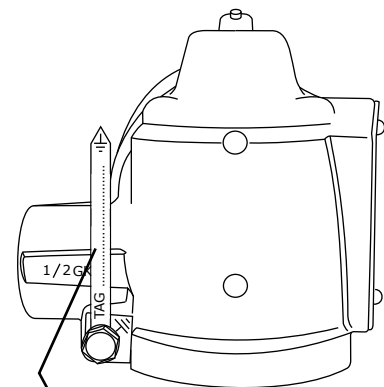
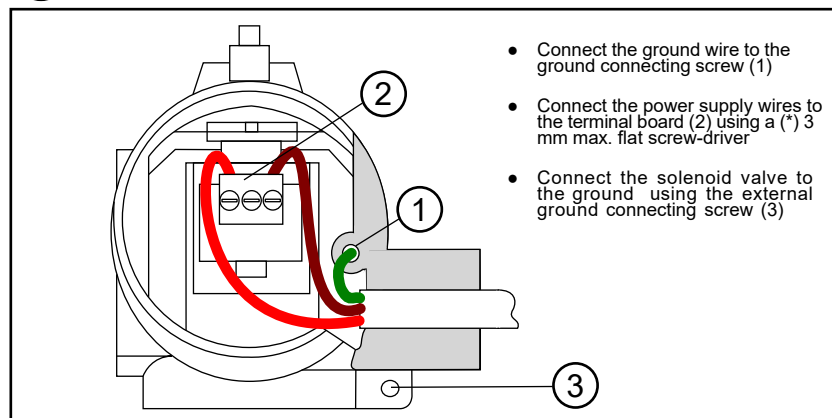


**C**



Pipe fittings used for cable entry (Cable, duct, conduit etc) are NOT supplied by the manufacturer. Installation engineers should ensure that the use of fittings are of the correct diameter and suitable to secure the tightness of the cable used. Where site conditions indicate, cable duct, conduit etc. must be ATEX approved, for a protection degree equal or greater than the protection degree indicated on the rating plate. The thread type is indicated on the housing: M20\*1.5mm, 1/2"NPT or 1/2"GK

**D**



Earth Tag. Can be customised with Tag number, part number etc.