

Solenoid Valve - Model HT2980B.COM & HT2980C.COM



- Specification & Dimensions: **Page 2**
- Accessories: **Page 3**
- Installation & Maintenance Procedures: **Page 4**
- Wiring details IP67 Housing Solenoid Coil: **Page 5**

Solenoid Valve - CO2 Fire Fighting Control

Benefits & Features

- Designed for CO2 fire fighting systems
- 1 1/4" - 18 UNEF 2B nut
- Quick acting
- Manual override with key interlock
- Safe Area, ATEX EExd IIB or IIC

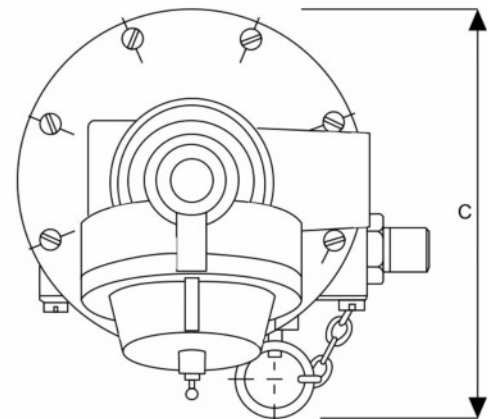
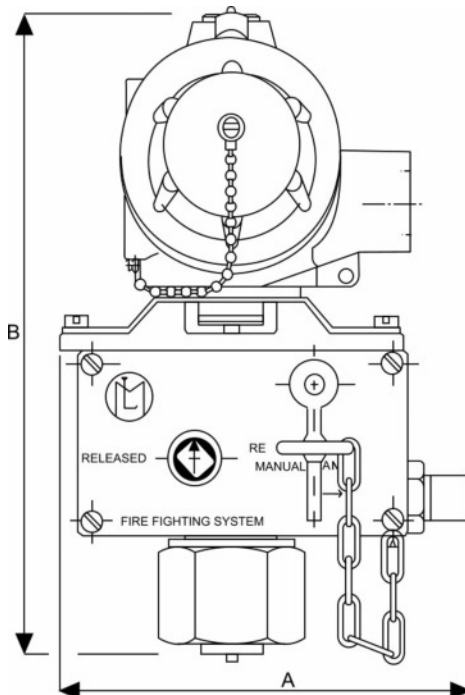
Specification

Configuration	Two way
Port Sizes	1 1/4" - 18 UNEF 2B lock nut
Input Time	2 sec
Operating temp.	-20 to +50°C
Cable Gland	1/2" GK
Media	CO2



Dimensions

Dimensions mm		
A	B	C
123.4	190.2	125.8
123.4	190.2	125.8



Order Codes

	Protection
B	II 1/2 GD EEx-d IIB T6 (-20 to +40°C)
C	II 1/2 GD EEx-d IIC T6 (-20 to +40°C)
H	Ex-d c IIB IP67 IECEX
T	Ex-d c IIC IP67 IECEX

Solenoid Valve - CO2 Fire Fighting Control

Accessories

- For single and multi-bottle applications
- Complete system integration
- More accessories are available



Angle adaptor
18P011

18P000

Interconnector for multi-bottle
applications



04P001

Fast
Flow
Valve

(Male thread that fits into bottle not show)



Check valves



Solenoid Valve Installation & Maintenance

Installation Procedures & Methods

Section 1: How to install Solenoid Valves

Solenoid Valves can normally be installed and operate in any orientation. However, certain models are designed to operate in horizontal installations. Please contact Red Dragon for further information.

Installation Procedure:

Check that the Solenoid Valve is the correct product ordered for the application:

- Isolate the site electrical power supply
- Isolate the site media supply (dependant on the application)...air, water, steam etc. Leave until cool/safe.
- Insert the valve onto the pipe, ensuring that the flow direction is observed.....IN for incoming media, or an arrow stamped on the valve body.
- Ensure that the pipe connections are free from burrs or loose pipe thread tape
- Tighten all pipe joints
- Connect electrical power supply via DIN electrical socket connector, as detailed in section 1
- Ensure that DIN connector is properly connected to solenoid coil and the gasket is installed correctly
- Apply media pressure and check for leaks

Section 3: Maintenance Procedure for Solenoid Valves - IP67 Safe Area & EExd with Housing

In the unlikely event of a valve malfunction, or routine maintenance, follow these instructions:

- Isolate the site electrical power supply
- Isolate the site media supply (dependant on the application)...air, water, steam etc.
- Remove the solenoid coil by unscrewing the coil retention nut anti-clockwise
- Remove the coil tube stem by unscrewing anti-clockwise
- Carefully remove the plunger assembly (inside the coil stem)
- Check the plunger assembly for damage or worn seals
- Check the face inside the coil stem for foreign particles that could prevent correct operation
- For Pilot Diaphragm Solenoid Valves: remove the top cover housing and check the diaphragm for damage and blocked transfer port.
- Re-assemble the valve in reverse order, ensuring that all parts are cleaned and assembled correctly

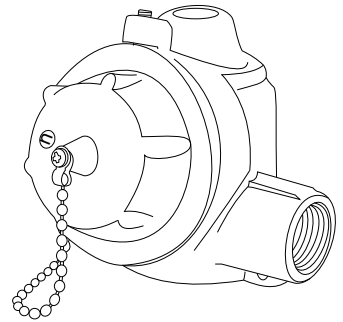


Electrical Wiring - IP67 Housing

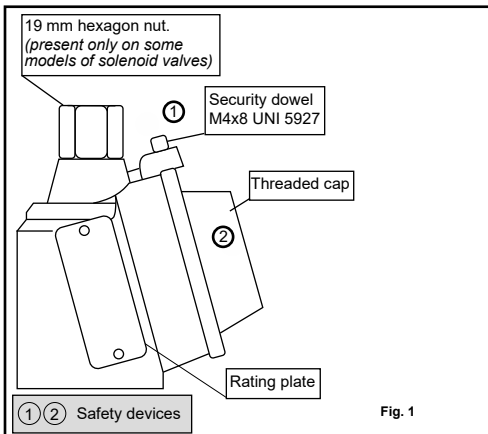
Installation Procedures & Methods



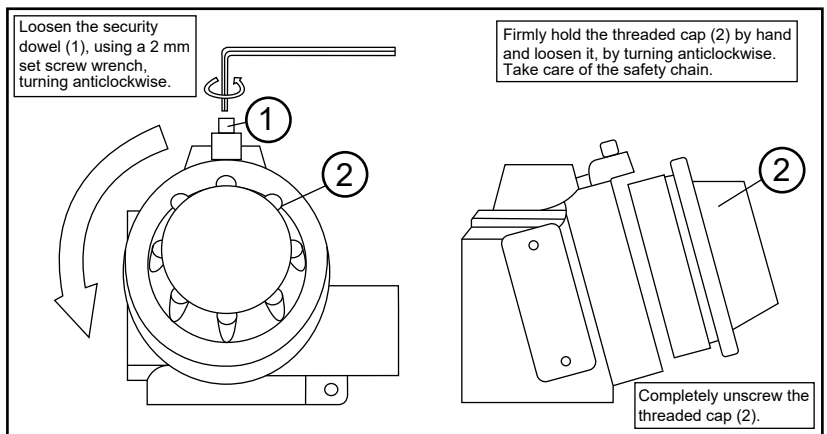
Attention: For safety purposes, always ensure that the power supply is disconnected. After de-energising, allow 15 minutes before continuing the following procedures



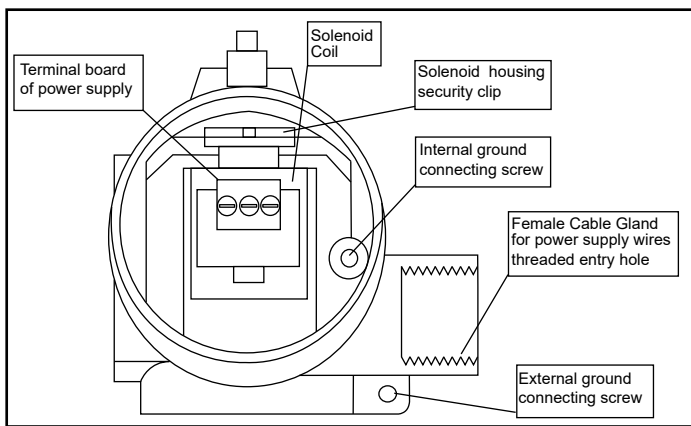
A



B



C



Pipe fittings used for cable entry (Cable, duct, conduit etc) are NOT supplied by the manufacturer. Installation engineers should ensure that the use of fittings are of the correct diameter and suitable to secure the tightness of the cable used. Where site conditions indicate, cable duct, conduit etc. must be ATEX approved, for a protection degree equal or greater than the protection degree indicated on the rating plate. The thread type is indicated on the housing: M20*1.5mm, 1/2"NPT or 1/2"GK

D

