

Solenoid Valve - CO2 Fire Fighting Control

Benefits & Features

- Designed for CO2 fire fighting systems
- 1 1/4" - 18 UNEF 2B nut
- Quick acting
- Manual override with key interlock
- Safe Area, ATEX EExd IIB or IIC

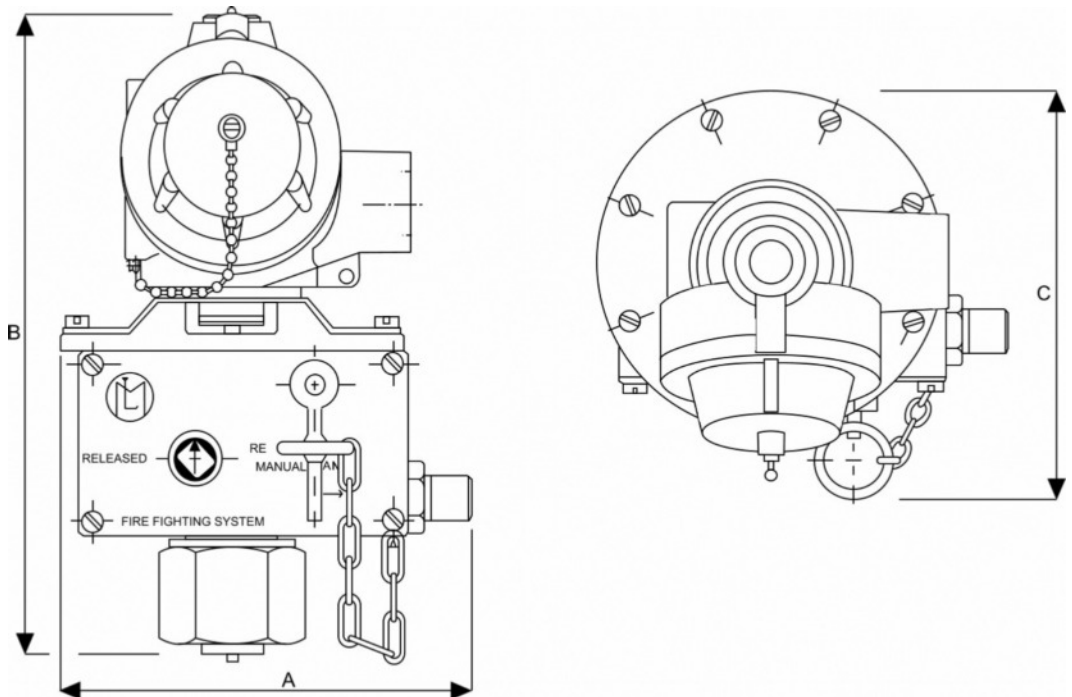
Specification

Configuration	Two way
Port Sizes	1 1/4" - 18 UNEF 2B lock nut
Input Time	2 sec
Operating temp.	-20 to +50°C
Cable Gland	1/2" NPT or M20*1.5mm
Media	CO2



Dimensions

Dimensions mm		
A	B	C
123.4	190.2	125.8
123.4	190.2	125.8



Order Codes

Protection	
B	II 1/2 GD EEx-d IIB T6 (-20 to +40°C)
C	II 1/2 GD EEx-d IIC T6 (-20 to +40°C)
H	Ex-d c IIB IP67 IECEX
T	Ex-d c IIC IP67 IECEX

Solenoid Valve - CO2 Fire Fighting Control

Accessories

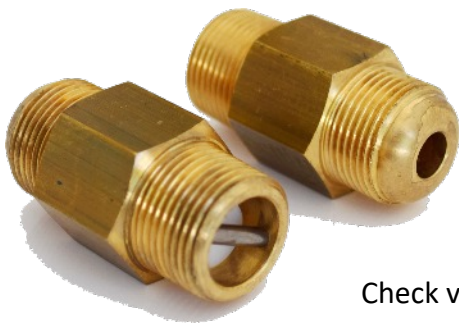
- For single and multi-bottle applications
- Complete system integration
- More accessories are available



Angle adaptor 18P011

18P000

Interconnector for multi-bottle applications



Check valves



04P001

Fast
Flow
Valve

(Male thread that fits into bottle not show)

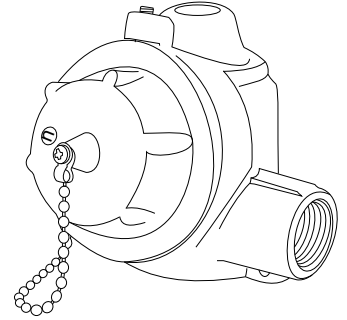


Electrical Wiring - IP67 Housing

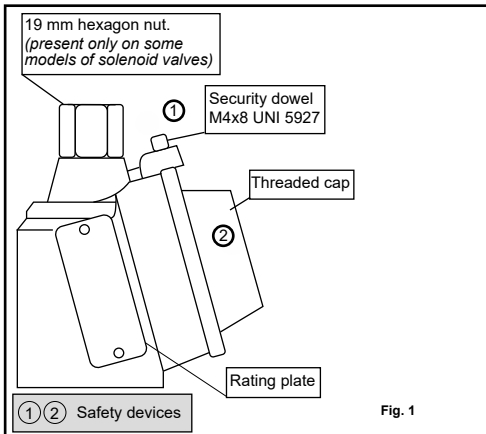
Installation Procedures & Methods



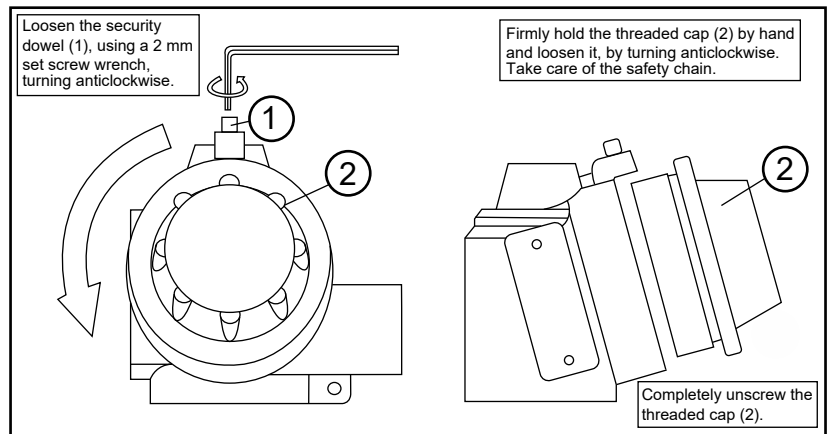
Attention: For safety purposes, always ensure that the power supply is disconnected. After de-energising, allow 15 minutes before continuing the following procedures



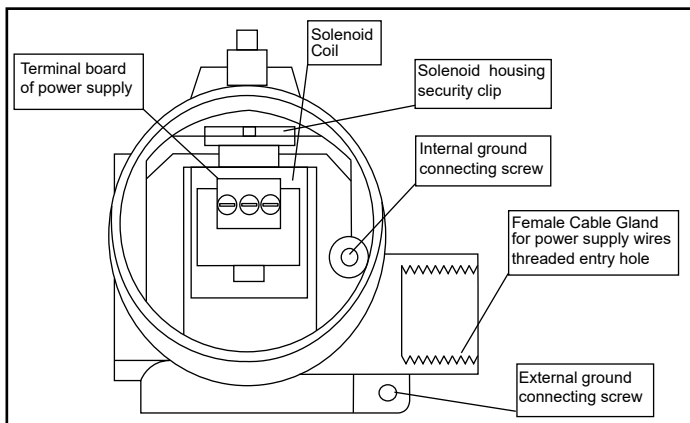
A



B

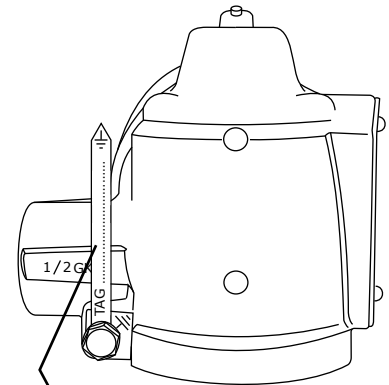
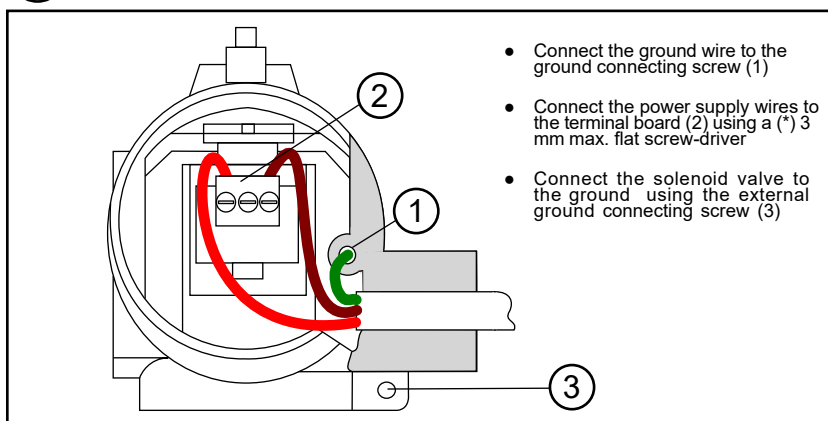


C



Pipe fittings used for cable entry (Cable, duct, conduit etc) are NOT supplied by the manufacturer. Installation engineers should ensure that the use of fittings are of the correct diameter and suitable to secure the tightness of the cable used. Where site conditions indicate, cable duct, conduit etc. must be ATEX approved, for a protection degree equal or greater than the protection degree indicated on the rating plate. The thread type is indicated on the housing: M20*1.5mm, 1/2"NPT or 1/2"GK

D



Earth Tag. Can be customised with Tag number, part number etc.